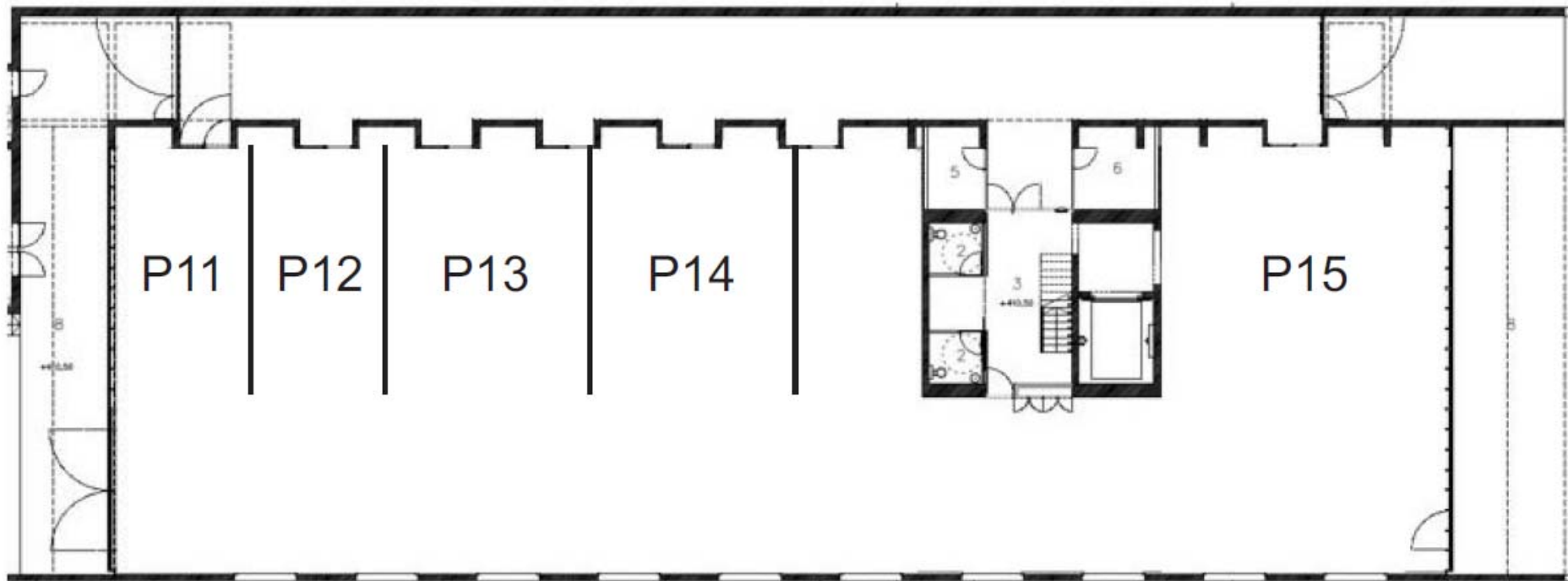


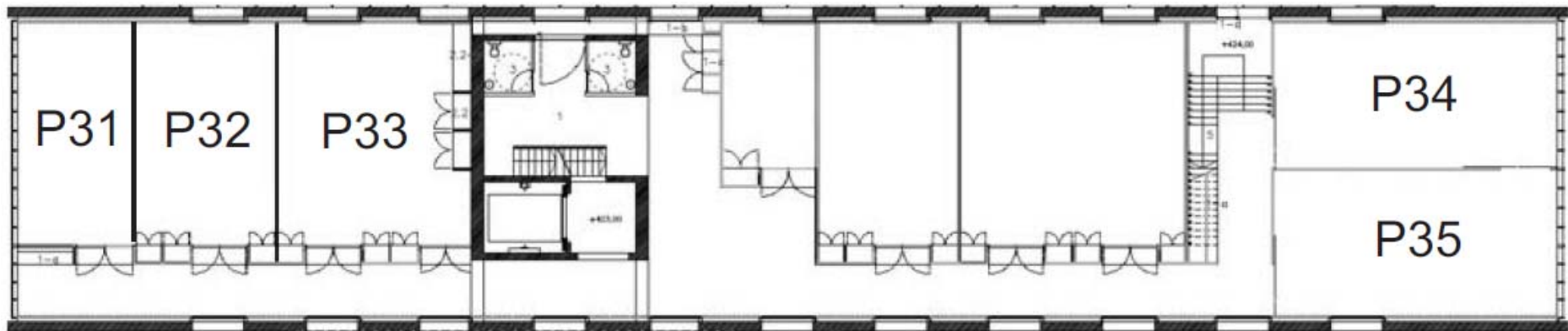
ANEXO III. PROPOSTA DE ASIGNACIÓN DE ESPAZOS

Planta 1 (Nave-taller, as divisións son orientativas)



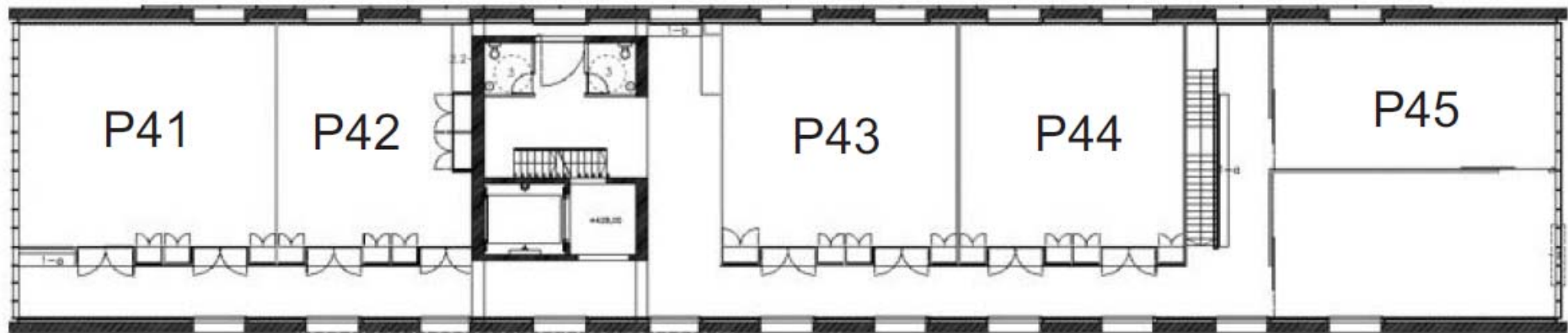
- P11 ( $\approx 50 \text{ m}^2$ ): Alejandro Pereira Domínguez.
- P12 ( $\approx 50 \text{ m}^2$ ): Juan María Pou Saracho.
- P13 ( $\approx 75 \text{ m}^2$ ): Jesús Doval Gandoy.
- P14 ( $\approx 75 \text{ m}^2$ ): José Antonio Vilán Vilán.
- P15 ( $\approx 90 \text{ m}^2$ ): José Luis Míguez Tabarés.

### Planta 3



- P31 ( $\approx 45 \text{ m}^2$ ): Luis Espada Recarey.
- P32 ( $\approx 45 \text{ m}^2$ ): José Cidras Pidre.
- P33 ( $\approx 70 \text{ m}^2$ ): Javier Taboada Castro.
- P34 ( $\approx 64 \text{ m}^2$ ): José Manuel Cruz Freire.
- P35 ( $\approx 64 \text{ m}^2$ ): José Luis Míguez Tabarés.

#### Planta 4



- P41 ( $\approx 90 \text{ m}^2$ ): M<sup>a</sup> Ángeles Sanromán Braga.
- P42 ( $\approx 70 \text{ m}^2$ ): Juan María Pou Saracho.
- P43 ( $\approx 85 \text{ m}^2$ ): Pío Manuel González Fernández.
- P44 ( $\approx 80 \text{ m}^2$ ): José Antonio Vilán Vilán.
- P45 ( $\approx 64 \text{ m}^2$ ): Xosé Ramón Novoa Rodríguez.